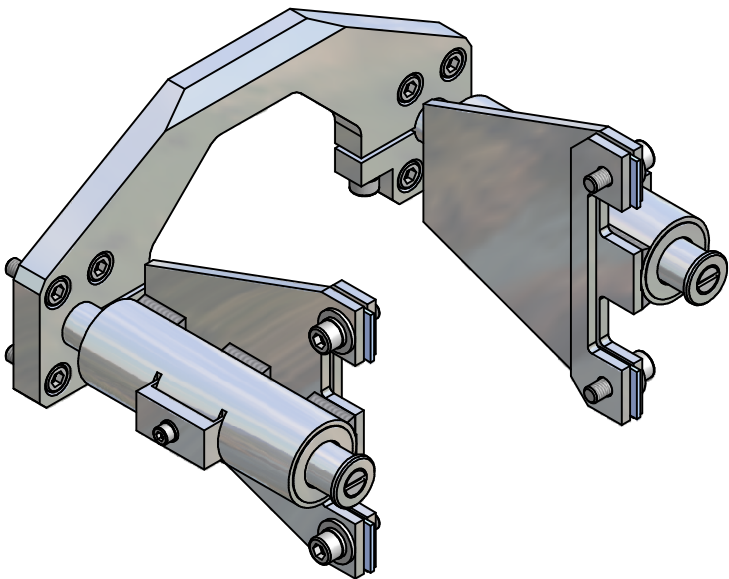
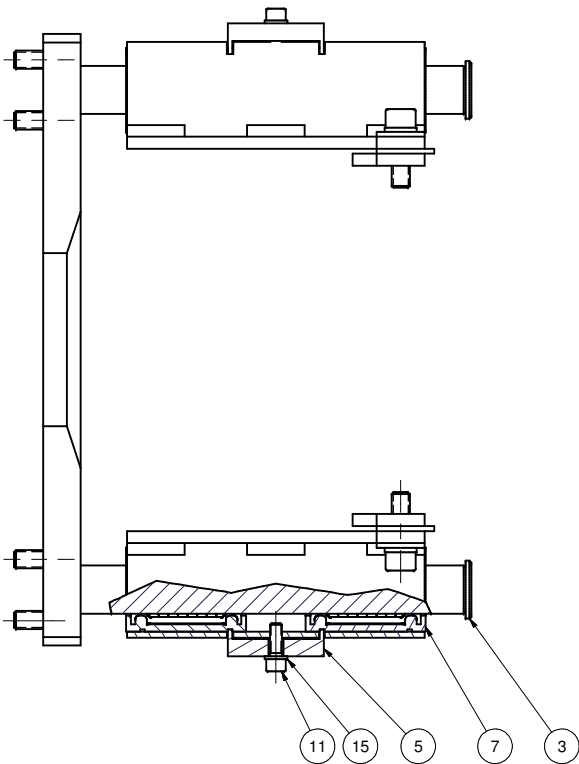
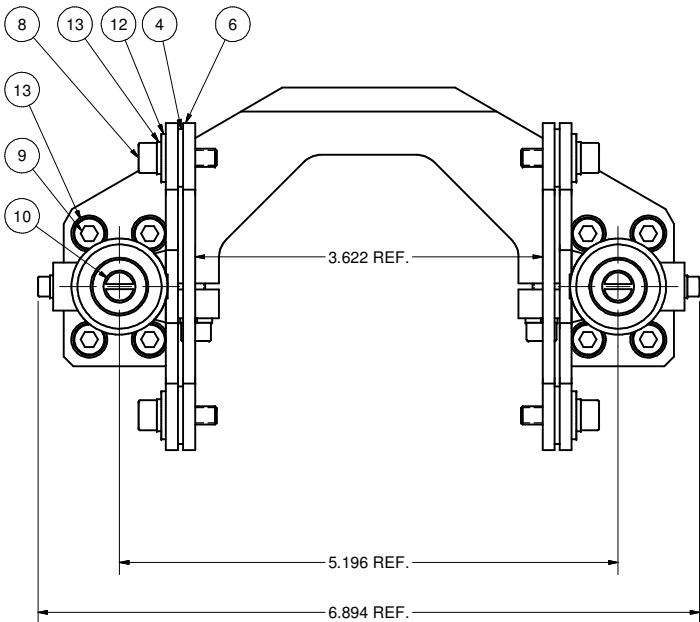
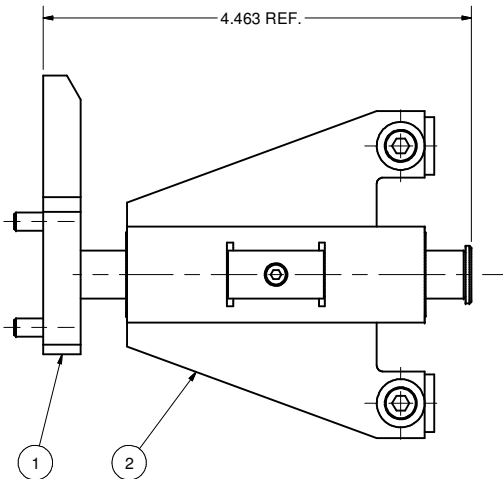


REVISIONS				
SYM.	ZONE	DESCRIPTION	DATE	APP.
C		Issued all design changes as Rev C (TIO)	4/19/07	SAB



NOTES:

1. CLEAN BEARINGS (ITEM 7) BEFORE INSTALLATION.  
THOROUGHLY REMOVE OIL AND GREASE.



15	-	#5 Spring Lock Washer	2			316 Stn. Steel	C
13	-	#10 Spring Lock Washer	12			316 Stn. Steel	C
12	-	#10 Washer	4			316 Stn. Steel	C
11	-	5-40 x 3/8 Sock. Hd. Cap Scr.	2			316 Stn. Steel, Dicronited	C
10	-	8-32 x 3/8 Slotted Flat Countersunk Head Machine Screw	2				C
9	-	10-32 x 1/2 Sock. Hd. Cap Scr.	8			316 Stn. Steel, Dicronited	C
8	-	10-32 x 5/8 Sock. Hd. Cap Scr.	4			316 Stn. Steel, Dicronited	C
7	-	1/2" ID ST.ST. BALL BUSHING BEARING	4			Reid's TLM-60	C
6	100.400.004	SPACER	2				C
5	100.400.003	CLAMP	2				C
4	100.400.002	SHIMS SET	4				C
3	100.400.001	STOP WASHER	2				C
2	100.415.000	BRACKET	2				C
1	100.410.000	SHAFTS ASSEMBLY	1				C

ITEM	DWG. NO.	DESCRIPTION	G1	G2	G3	REMARKS	REV.
PLOT DATE: 4/19/2007 CAD FILE NAME: 100-400-000.idw			QUANTITY				
UNLESS OTHERWISE SPECIFIED: DIMENSIONS ARE IN INCHES: TOLERANCES ON: .00 ± .010 .000 ± .005 FRACTIONS ± 1/64 ANGLES ± 0.5° ALL SURFACES			CORNELL UNIVERSITY FLOYD R. NEWMAN LABORATORY ITHACA, NY 14853			75 kW CW INPUT COUPLER LINEAR GUIDE	
CHECKED BY: VGV APPROVED BY: SAB			DRAWN BY VM	DRAWN FOR SAB	DATE 1/29/2006	SCALE 1:1	REV. C